

CONTEMPORARY ART IN KOREA



**Venice
Biennale
Korean
Pavilion 2011**

Lee Youngbaek

Angel Solider
-soldiers
camouflaged in
floral-printed
military uniforms



**Venice Biennale
Korean Pavilion
2011**

Lee Youngbaek

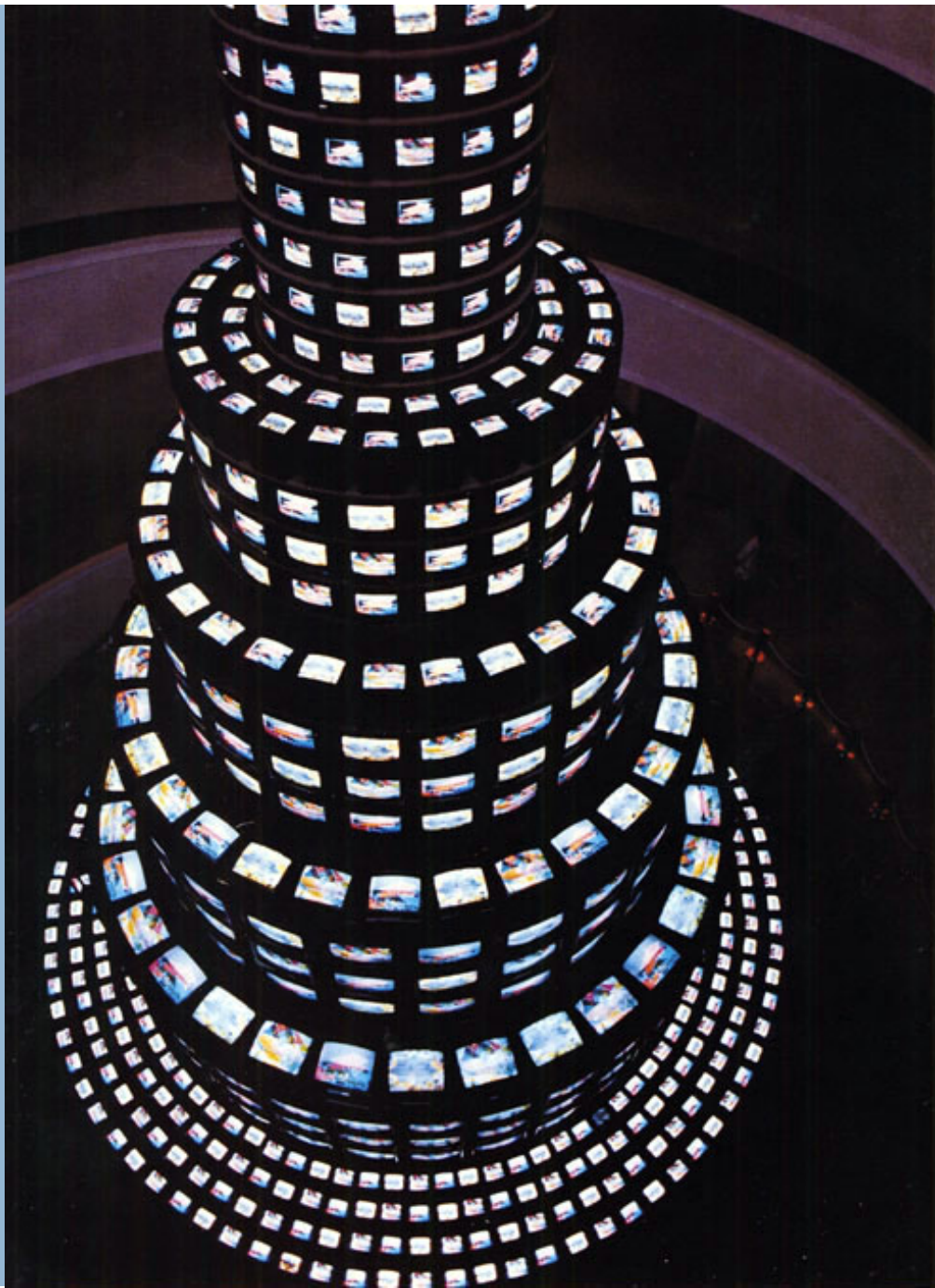
Top Image:
Pieta: self-hatred
-two cast-molded
figures

Bottom Image:
'Pieta: self-death'
with 'Plastic fish'
on adjacent wall

NAM JUNE PAIK

- Born June 30th, 1932 in Seoul
- Died January 29th, 2006 in Miami





**The More the
Better, (1988)**

Three channel
video installation
with 1,003
monitors and
steel structure;
color, sound;
approx. 60 ft.
high.



Tv Cello (1971)

Mixed media: video tubes, TV chassis, plexiglass boxes, electronics, wiring, wood base, fan, stool, photograph



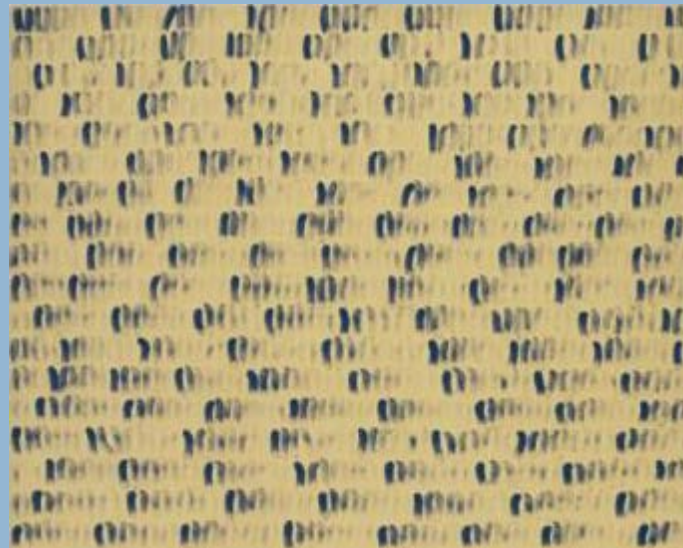
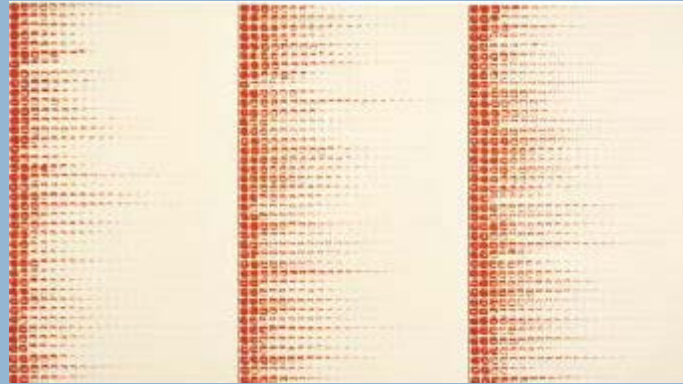
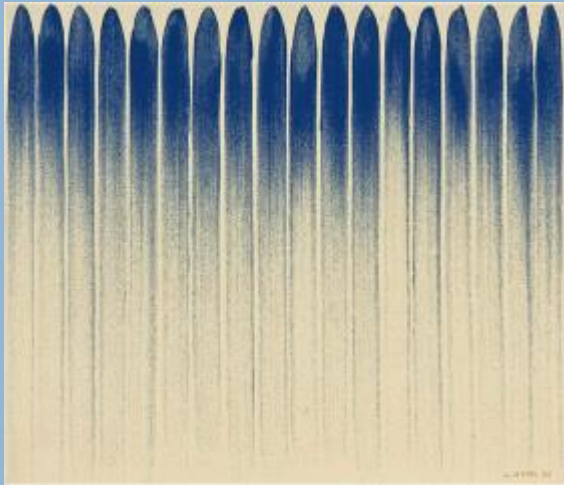
**Electronic
Superhighway:
Continental
U.S., Alaska,
Hawaii (1995)**

49-channel closed
circuit video
installation, neon,
steel and electronic
components. Approx.
15 x 40 x 4 ft.

LEE UFAN

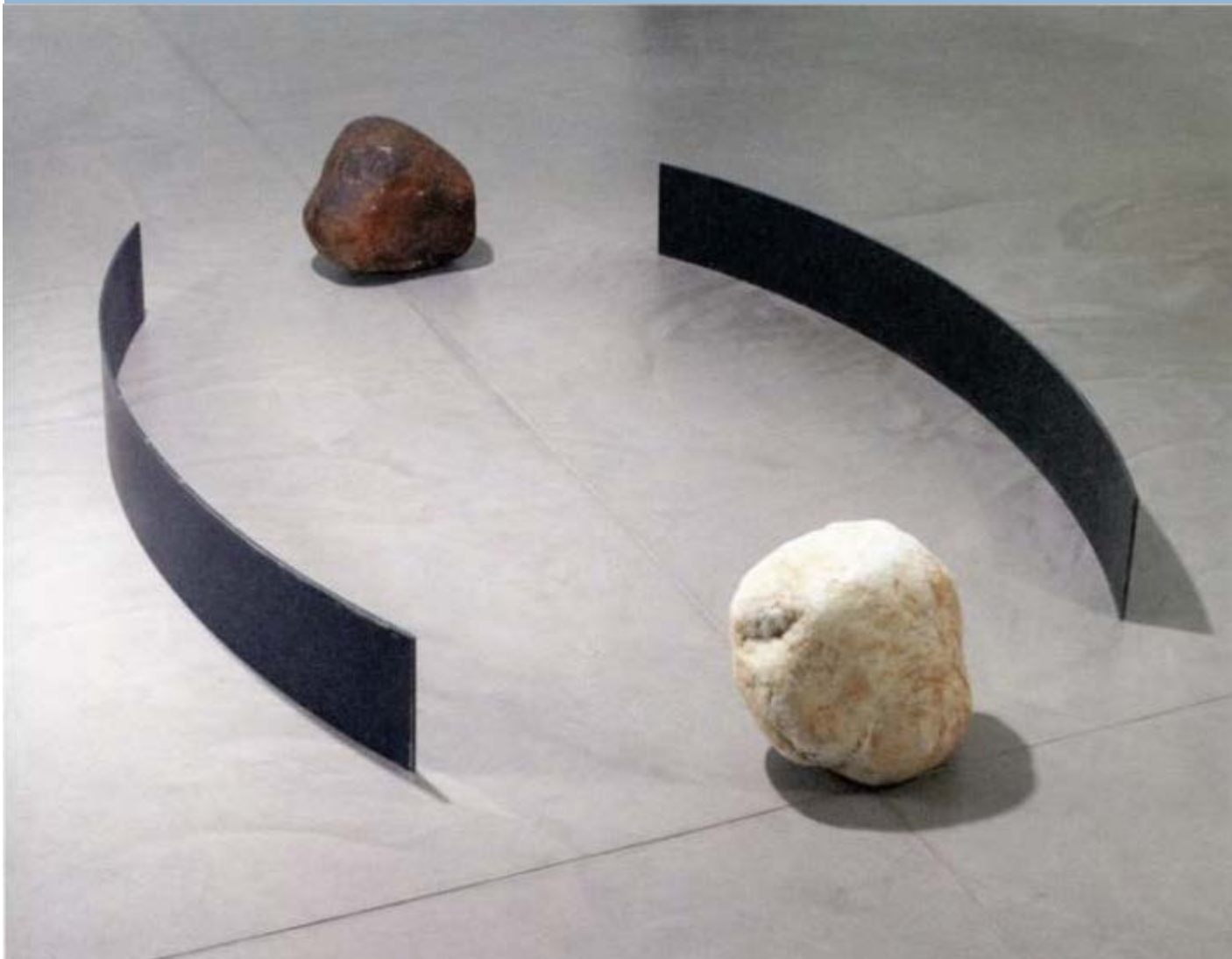
- Born in 1936 in Haman County





From Line and From Point (1972 - 84)

Painting series.
Pigment suspended
in glue on canvas
18 x 20 inches

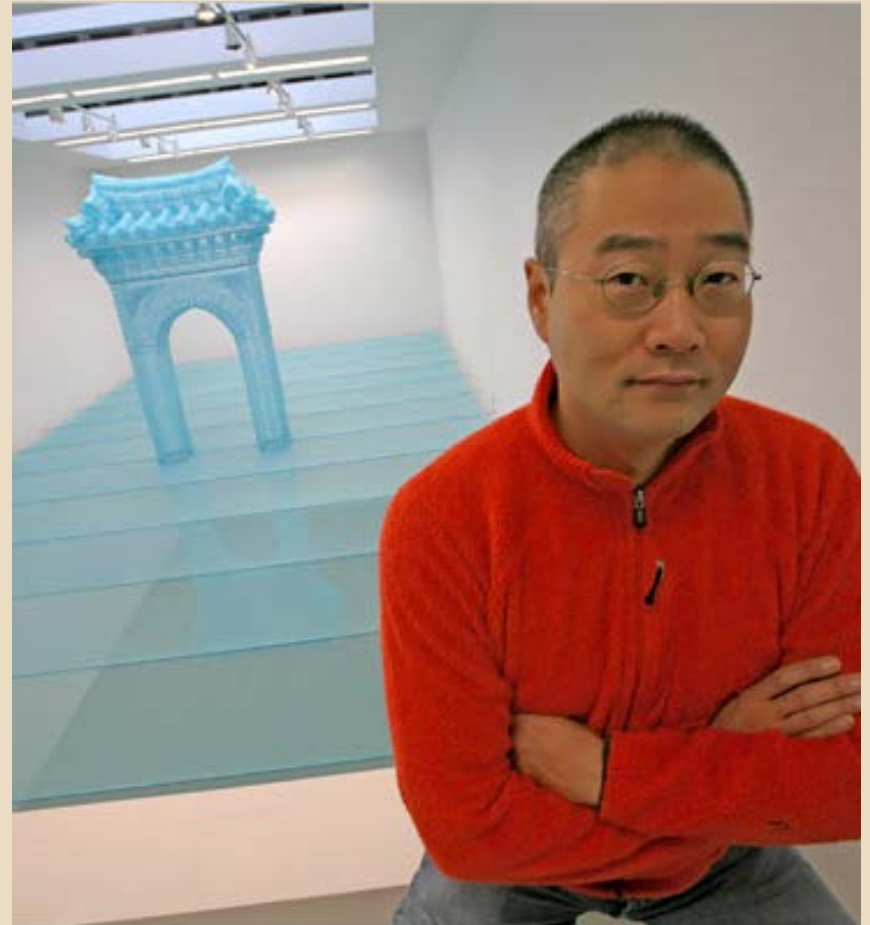


**Relatum -
Dialogue
(2008)**

Iron plates (2
plates)
230x25x1cm,
Natural stones (2
pieces)
60x60x60cm

DO-HO SUH

- Born in 1962 in Seoul





Staircase-IV (2004)

Gossamer red
nylon fabric.
Dimensions
variable



**High School
Uni-Form
(1997)**

Fabric, plastic,
stainless steel,
casters 300
parts total.
701x551.2x137.
2 cm



**Some/One
(2003)**

Stainless steel
military dog-tags,
nickel plated
copper sheets,
steel structure,
glass fiber
reinforced resin,
rubber sheets
81 x 126 in.
(205.7 x 320 cm)



Floor (1997-2000)

PVC figures, glass plates, phenolic sheets, polyurethane resin. 4 parts, each: 3.15 x 39.37 x 39.37 (each square measures 1 meter square), 32 modules total

HAEGUE YANG

- Born in 1971 in Seoul





Series of
Vulnerable
Arrangements
- Seven Basel
Lights (2007)
Seven light
sculptures with
scent emitter
(Wood Fire scent)



***Holiday for
Tomorrow,
(2007)***

**Painted wooden
screens with metal
feet (Yes-I-Know-
Screen); PVC,
shells (Shell
Sculpture); 10
colored Venetian
blinds, steel cable
(Blind
Department);
wooden platform
with monitor
showing 13 min
DVD (Holiday
Story)**

LEE BUL

- Born in 1964 in Seoul





Sternbau No. 4
(2007)

Crystal, glass and
acrylic beads on
nickel-chrome
wire, stainless
steel and
aluminum
armature
130x70x70 cm



Cyborg W1 (1998)

*Cast silicone,
polyurethane
filling, paint
pigment.
185x56x58 cm*



Thaw (2007)

Fiberglass, resin,
acrylic paint,
black crystals
and mixed media.
93x113x212 cm