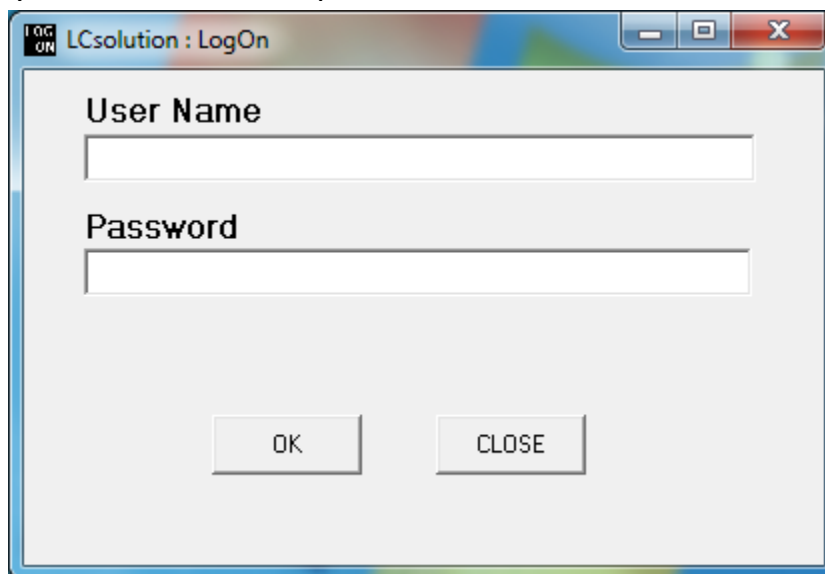
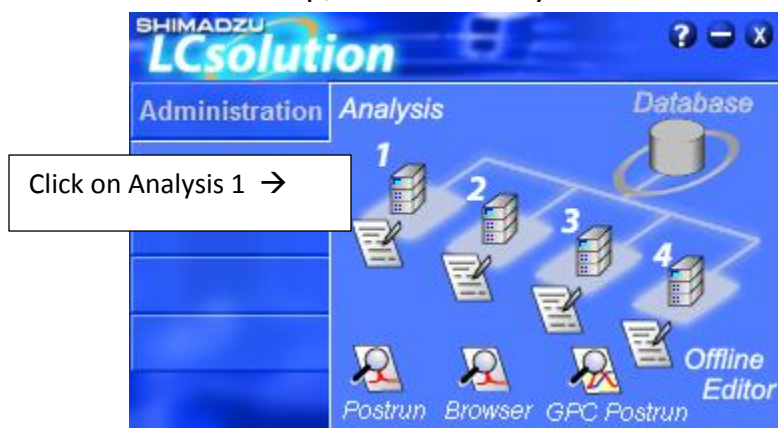


Shimadzu GPC User's Booklet

- 1) Login with your username and password.



- 2) After the software comes up, click on Analysis Instrument 1



- 3) If the Shimadzu login box comes up, log in as “gpc user”, no password needed.



You will hear a beeping sound as the data system connects to the instrument.

- 4) Switch the solvent valve down to direct the solvent to the waste bottle:



- 5) Check to make sure there is enough THF in the reservoir bottle, in order to do your experiments. If not, refill the bottle:



Procedure for filling the bottle, if needed:

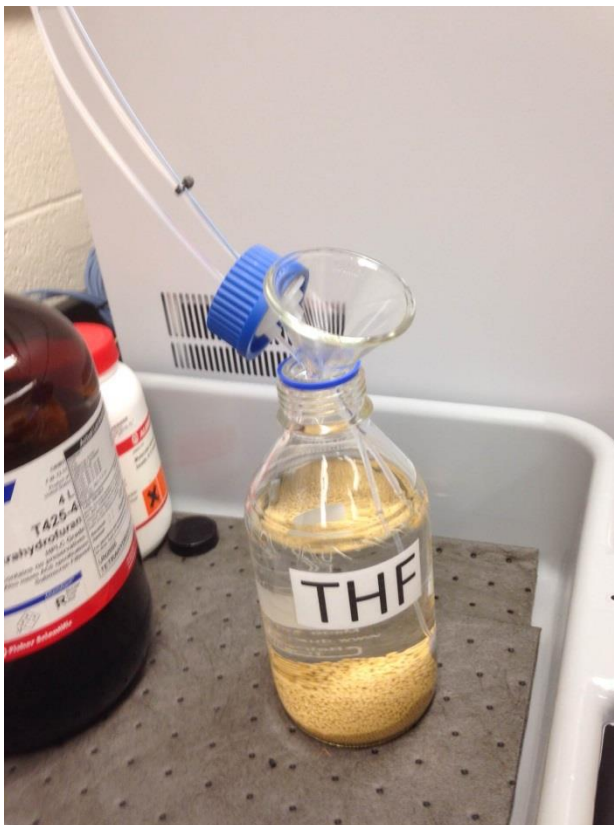
a) Carefully pick up the bottle and place it in the tray in the filling area.

Carefully pick up the bottle.



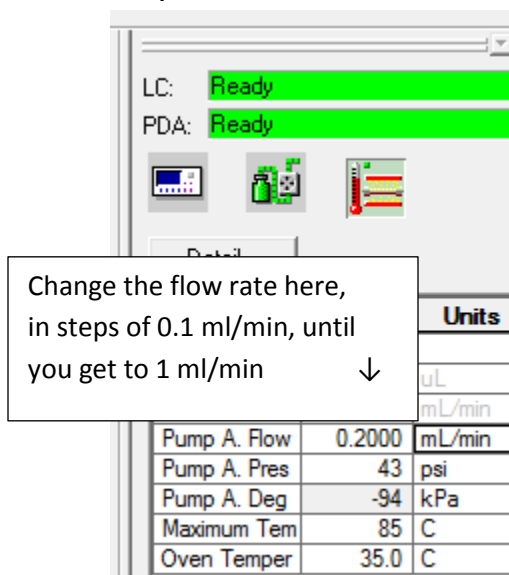
← Place bottle in tray in filling area.

- b) Undo the cap, and place a funnel in the bottle. Be sure to keep the solvent line filters covered in solvent, so that they will not pull in air.

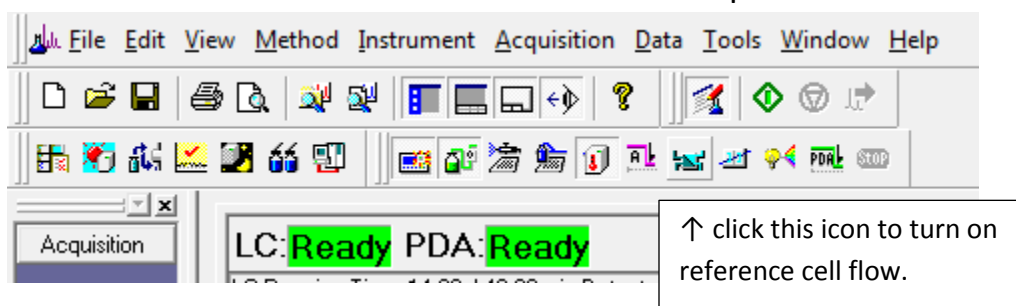


- c) Carefully fill the bottle with THF.
d) Remove the funnel, and replace the cap on the bottle.
e) Put the bottle back on top of the instrument.

- 6) Slowly increase the solvent flow in steps of 0.1 ml/min, until you get to 1.0 ml/min. Wait approximately 20 seconds between each step.

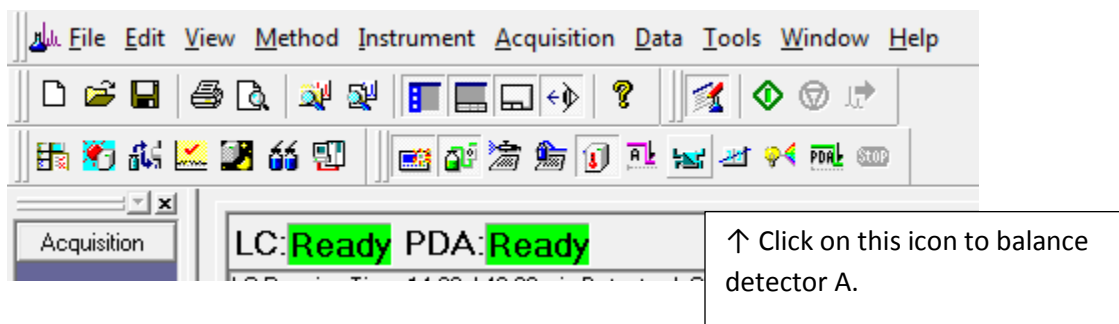


- 7) Switch on the Detector A reference cell flow for a couple of minutes:

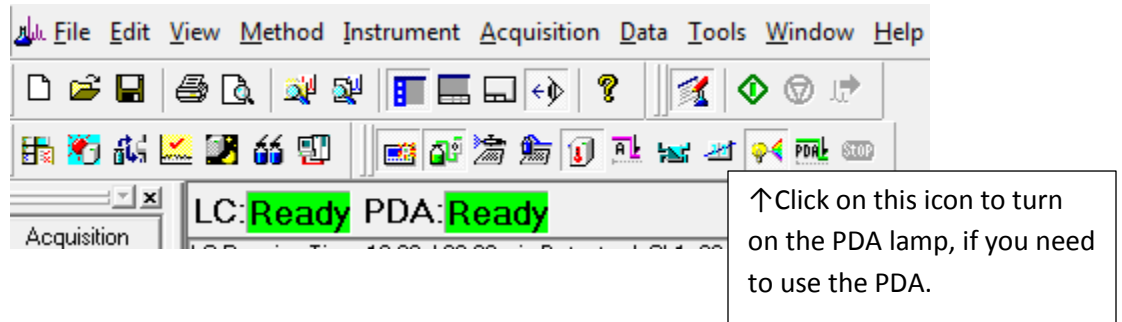


After 2 minutes, click the icon again to turn the reference cell flow off.

- 8) Click on the icon to balance detector A.



- 9) Click on the icon to turn on the PDA lamp, if you need to use the PDA. If you do not need to use the PDA, then do not turn on the lamp. It will make the lamp have a longer lifetime.



- 10) Click on File, Open Method File, and open the Student Default Method.
- 11) Insert your samples into the autosampler tray. Be sure to push the tray all of the way in, until it clicks:



- 12) Go to Batch Processing, by clicking on the Batch Processing icon:



← click on Batch Processing.

- 13) Fill out the Batch Processing table, with one line for each sample.
- 14) Click on the Batch Start icon to begin the data acquisition.
- 15) How to do data processing when you are done collecting data:
 - a) Click on the LC solution icon.



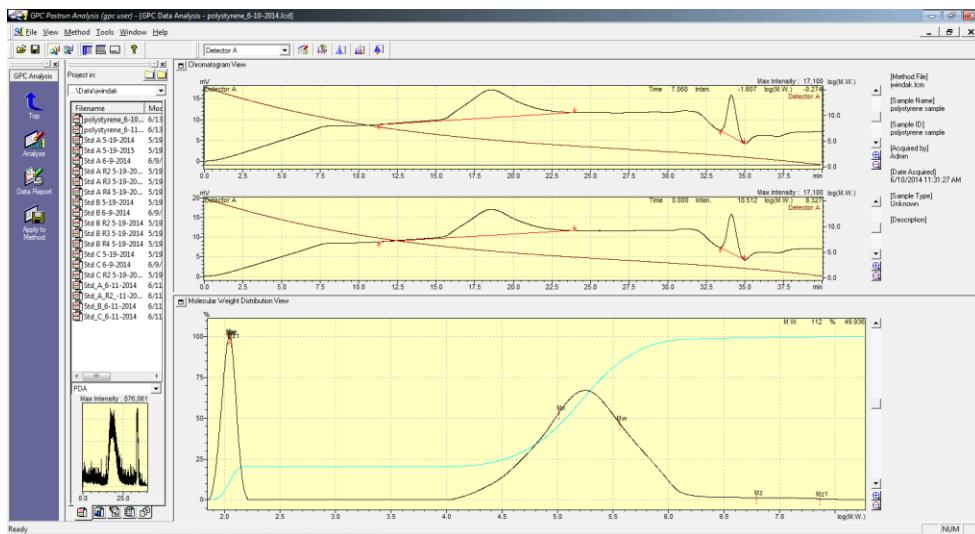
Click on the LC Solution icon ↑

b) The following display will come up. Click on "GPC Postrun"

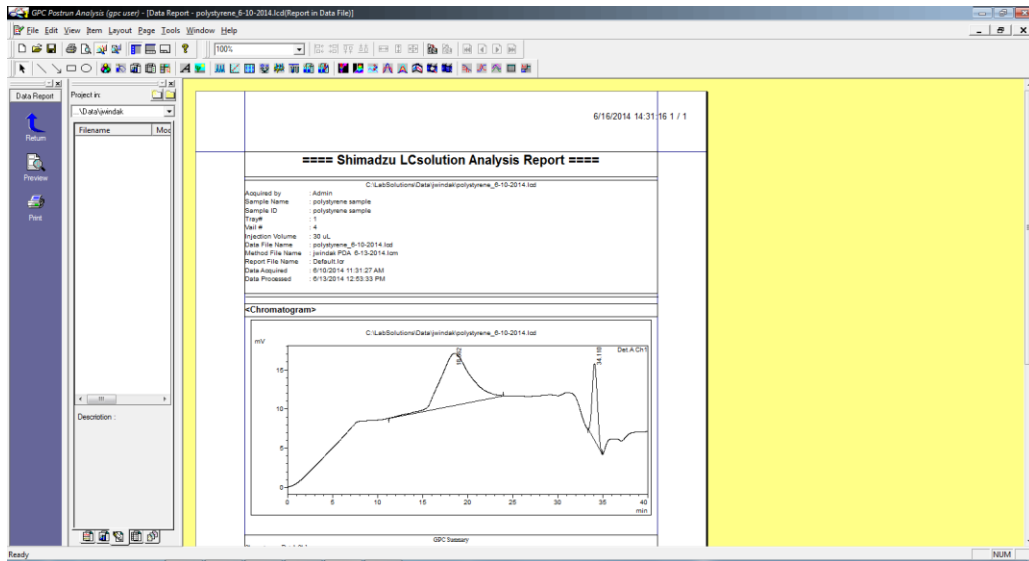


Click on GPC Postrun ↑

- c) After the GPC Post Run software comes up, click on the File menu, and then click on “Load Method Parameters.....”, and open the most recent student processing method.
- d) Click on File, and Open Data File, to open the file you want to process.
- e) The data should be automatically processed.



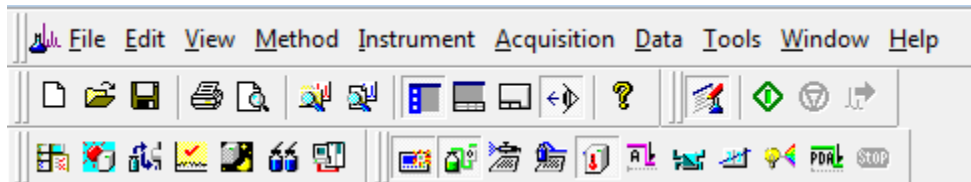
f) To generate a report, click on the Report icon. Click on File and Open to open the Student Default report template.



g) Click on Print to print the report.

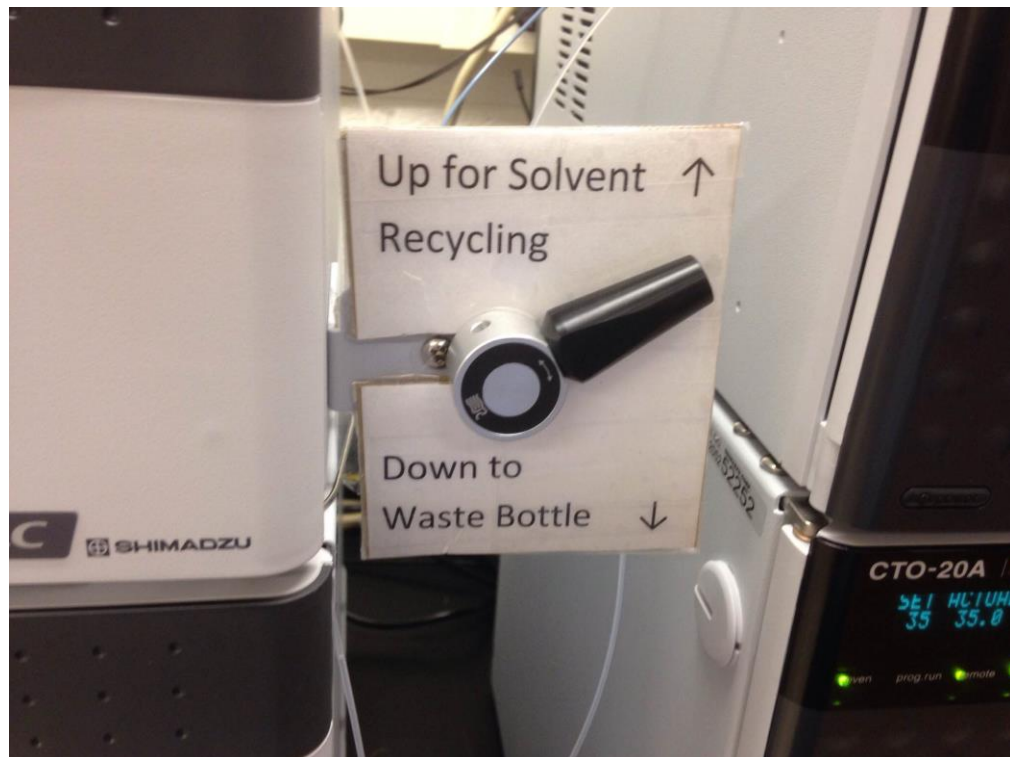
How to Shut the System Down When you are Finished:

- 1) Slowly turn the flow rate down, in steps of 0.1 ml/min, waiting about 20 seconds at each step.
- 2) Click on the icon to turn off the PDA lamp, if it had been used.



If the PDA had been used, click on this icon to turn it off. ↑
If the icon appears not pressed in, then the lamp is off.

- 3) Switch the valve up to recycle the solvent:



4) Close all of the software completely. Close the LC Solution software by clicking on the X:

Click on the X to close ↓



You should then see the login screen. This tells you that you are completely logged off:

